

# *BhiNder*



### Question#1

Physical and logical threat

Ans:

**physical threats** may include theft, vandalism, and environmental damage,

**logical threats** are those that may damage your software systems, data, or network without actually damaging your hardware.

---

### Question#2

**Risk management phases**

Ans:

---

The 7 steps below provide a good framework for effectively managing project risk.

Step 1- Outlining Objectives. ...

Step 2 – Risk Management Plan. ...

Step 3 – Identification. ...

Step 4 – Evaluation. ...

Step 5 – Planning. ...

Step 6 – Management. ...

Step 7 – Feedback.

### Question#3

**Steps for management control trial**

Set Performance Standards. ...

1.Measure Performance. ...

2.Compare Actual Performance Against Performance Standards. ...

3.Analyze Deviations. ...

4.Take Corrective Actions. ...

5.Track Progress on Gantt Charts. ...

6.Measure Performance on Dashboards. ...

7.Manage Workload and Reallocate Resources.

### Question#4

**Encryption and decryption**

**Encryption** is the process by which a readable message is converted to an unreadable form to prevent unauthorized parties from reading it.

**Decryption** is the process of converting an encrypted message back to its original (readable) format. The original message is called the plaintext message.

### Question#5

**Write names of five types of active attacks**

●Session Hijacking Attack A session hijacking attack is a form of active attack in which the attacker will take over your internet session. ...

●Message Modification Attack ...

- Masquerade Attack ...
- Denial-of-Service Attack ...
- Distributed Denial-of-Service Attack ...
- Trojans

- 
- 

#### **Question#6**

**In system analysis and design, which tools are used in structured analysis and design approach? Just name the tools.**

**Ans:**

Structured Analysis Tools

Data Dictionary.

Data Flow Diagrams.

Decision Trees.

Decision Tables.

Structured English.

Pseudocode.

#### **Question#7**

**7.Mention the standard that is used to maintain the structure of electronic document.**

**Ans:**

**An electronic document management system [EDMS]** is software that manages the creation, storage, and control of semi-structured documents. It consists of several technologies including, but not limited to document management, COLD (Computer Output to Laser Disk), imaging, and workflow.

#### **Question#8**

**Identify the type of virus for each of the following statement.**

**Ans: ( read book about this question)**

Boot Sector Virus.

Direct Action Virus.

Multipartite Virus.

Polymorphic Virus.

Resident Virus.

File Infector Virus.

**Question#9**

**A malicious program that is disguised as or embedded within legitimate software**

**Ans:**

**Trojan.** A Trojan disguises itself as desirable code or software. Once downloaded by unsuspecting users, the Trojan can take control of victims' systems for malicious purposes. Trojans may hide in games, apps, or even software patches, or they may be embedded in attachments included in phishing emails.

**Question#10**

**A program that overwrites every program/software/file it infects with itself.**

**virus** (computer virus) A computer virus is malicious code that replicates by copying itself to another program, computer boot sector or document and changes how a computer works.

**Question#11**

Identify which of the following information is used as input and output for Vulnerability Assessment.

---

a- A list of potential vulnerabilities

Used as output

b- Any audit comments

Used as input

**Question#12**

Three salient features of objective oriented program?

There are three major features in object-oriented programming that makes them different than non-OOP languages: encapsulation, inheritance and polymorphism.

**Question#13**

flow chart banana tha admission process ka scenerio based .

See on book

**Question#14**

describe phases of change management

Through this organisational change management process, change practitioners

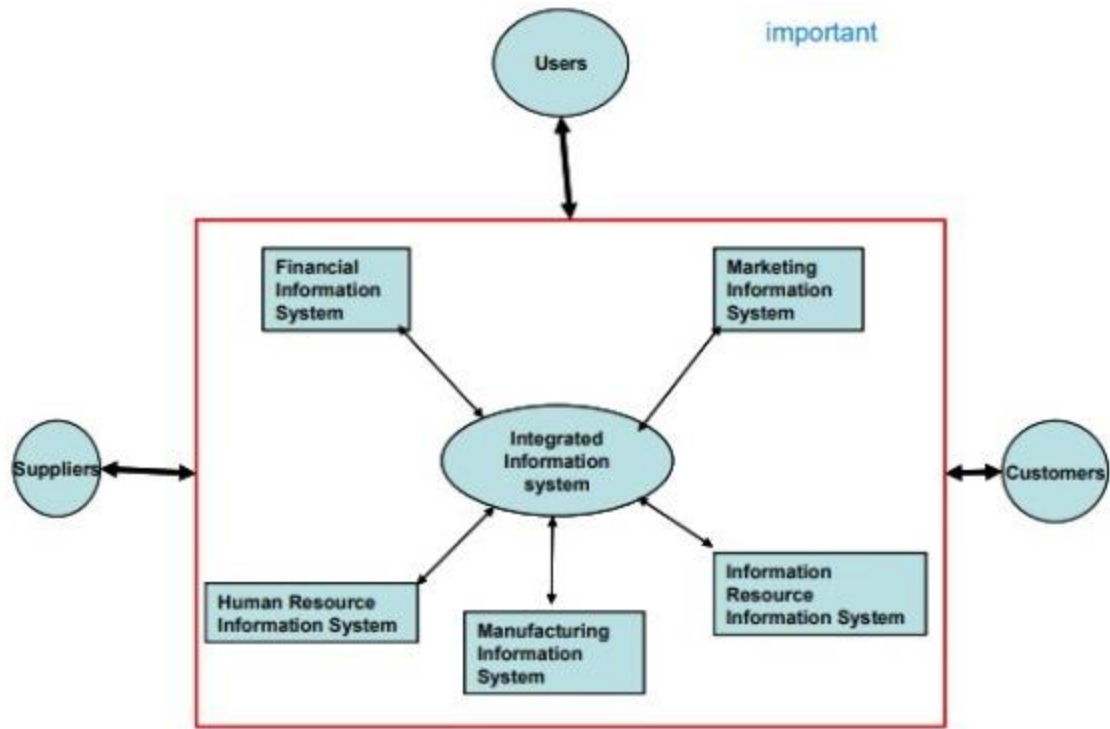
work through three phases (Phase 1– Prepare Approach, Phase 2 – Manage Change, Phase 3 – Sustain Outcomes) to achieve successful project outcomes.

**Question#15**

integrated information system ke features and diagrams

An integrated information system is a combination of software that combine different databases from various sources with data integration tools, visualization and models. For a complex area such as aquaculture, a single software becomes insufficient, or very complex and therefore very uncertain or

undecidable.



---

---

---

---

---

---

---

---

---

---

**Question#16**

IDS with four components?

4 main components make up an IDS—an

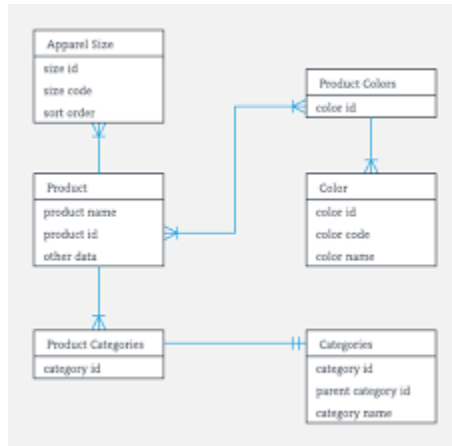
IDS sensor or agent,

a management server,

a database server, and an IDS console.

**Question#17**

Diagram Relationship & Entity.



**Question#18**

Write at least 5 Best Passwords.

qwerty.

12345.

qwerty123.

1q2w3e.

12345678.

1234567890.

111111.

**Question#19**

Symbol of 2 terminator, process decision

**Question#20**

4 fire philosophy

Ans:

The Four-Fires is predicated on the idea that we can and should win in all of the areas of our lives and with the acknowledgment that if we are not intentional, the natural paths of life will lead to some area of dysfunction and dissatisfaction.

**Question#21**

5Types of threat

Ans: important

Malware.

- Cloud security.
- Data loss.
- Password attacks.
- Insider threats.
- DDoS.

- Network vulnerabilities.
- Formjacking.

### **Question#22**

1Types of assets.

Ans:

Accounts Receivable.

- Inventory.
- Investments.
- PPE (Property, Plant, and Equipment)
- Vehicles.
- Furniture.
- Patents (intangible asset)

Cash and cash equivalents.

### **Question#23**

difference between types of threat

### **Question#24**

technical or non technical system me difference

Ans:

*Technical* writing is meant for experts in their field,

while *non-technical* content is usually written for the general audience who aren't familiar with certain technical terms

### **Question#25**

risk management k two steps

Ans:

The five steps of the risk management process are identification, assessment, mitigation, monitoring, and reporting risks. By following the steps outlined below, you will be able to create a basic risk management plan for your business.

### **Question#26**

how organization work on e\_commerce model... objective...

### **Question#27**

Method of integration

Ans:

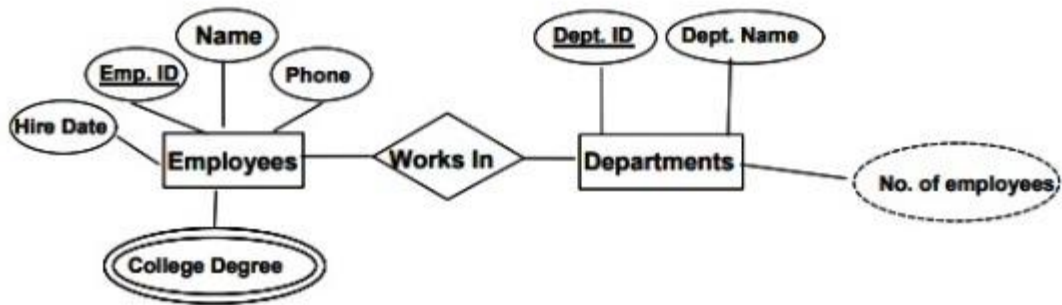
The most commonly used Integration methods are Integration by Parts, Method of Integration Using Partial Fractions, u-substitution method, Integration by Decomposition, and Reverse Chain Rule.

### **Question#28**

Double ellipse and dashed ellipse k function thy

Ans:

### ERD Example



The diagram shows a primary relationship is between two entities, employee and the department. The relationship is of an employee working in a department. The figure also shows information available for each of these entities.

### Question#29

Critical success ka factor that

Ans:

( book 125)

Environmental Factors. These are factors such as public policy, economy, new technologies and competitor actions over which an organization has no direct control. ...

1.Industry-Related Factors. ...

2.Peer-Related Factors. ...

3.Temporal Factors. ...

4.Management-Position Factors.

### Question#30

2 Log QUESTION

What is main targets of computer for viruses.

Ans: (book 140)

Boot sector viruses specifically target the boot sector and/or the Master Boot Record (MBR) of the host's hard disk drive, solid-state drive, or removable storage media (flash drives, floppy disks, etc.). The most common way of transmission of computer viruses in boot sector is physical media.

### Question#31

**Passive attack and it's types**

Ans:

**Passive attacks** This class of network attacks involves probing for network information. These passive attacks can lead to actual active attacks or intrusions/penetrations into an organization's network. By probing for network information, the intruder obtains network information as that can be used to target a particular system or set of systems during an actual attack.

Types of Passive attacks Examples of passive attacks that gather network information include the following:

- Network Analysis
- Eavesdropping
- Traffic Analysis

### Question#32

Draw the symbol of equality and inequality

Ans:

The five inequality symbols in Maths are greater than symbol ( $>$ ), less than symbol ( $<$ ), greater than or equal to symbol ( $\geq$ ), less than or equal to symbol ( $\leq$ ), and not equal to symbol ( $\neq$ ).

### **Question#33**

Identify the Intrusion

Ans:

An Intrusion Detection System (IDS) is a monitoring system that detects suspicious activities and generates alerts when they are detected. Based upon these alerts, a security operations center (SOC) analyst or incident responder can investigate the issue and take the appropriate actions to remediate the threat.

### **Question#34**

Two Characteristics of M-Commerce.

Ans:

M-commerce systems have two major characteristics: mobility and broad reach. Mobility implies portability, e.g., users can conduct business in real time via mobile devices. With m-commerce, people can be reached at any time via a mobile device .

### **Question#35**

Identify the type of audit record.

Ans:

There are three main types of audits: external audits, internal audits, and Internal Revenue Service (IRS) audits. External audits are commonly performed by Certified Public Accounting (CPA) firms and result in an auditor's opinion which is included in the audit report.

### **Question#36**

E-Learning?

A learning system based on formalised teaching but with the help of electronic resources is known as E-learning. While teaching can be based in or out of the classrooms, the use of computers and the Internet forms the major component of E-learning.

### **Question#37**

Types of Threats?

Ans:

Cybercrime. Cybercriminals' principal goal is to monetise their attacks. ...

- Hactivism. Hacktivists crave publicity. ...
- Insiders. ...
- Physical threats. ...
- Terrorists. ...
- Espionage.

### **Question#38**

Why people afford to change of new things.

Ans:

• We fear change because it means that outcomes are unknown. Our brains are designed to find peace in knowing. When we don't know what will happen, we make up scenarios and, in turn, create worry. Humans find it hard to move on when something known comes to an end .

### **Question#39**

Assets of information sa tha identify the two Assets which is in the questions.

Ans:

types

**If assets are classified based on their physical existence, assets are classified as either tangible assets or intangible assets.**

- Tangible Assets. Tangible assets are assets with physical existence (we can touch, feel, and see them). ...
- Intangible Assets. Intangible assets are assets that lack physical existence.

### **Question#40**

How information assets are identified?

By classifying and managing valuable knowledge and data, it becomes an information asset. How can an organization identify an information asset? A simple test is if the information has an associated cost to acquire. If an information asset were to be lost or leaked, it would be damaging to the organization.

### **Question#41**

Applications/systems used before ERP.

MRP systems preceded ERP systems. Early MRP, or material resource planning, systems offered basic inventory control to help manage procurement and delivery of goods. ERP systems first appeared in the '90s and pulled in information from other parts of the business, like accounting, sales and HR .

### **Question#42**

Flow chart symbols k name btane thay, ye 2 questions aye 8 marks k. Lucky me .

Ans:

Start/End Symbol. The terminator symbol marks the starting or ending point of the system. ...

- Multiple Documents Symbol. Represents multiple documents in the process. ...
- Manual Input Symbol. ...
- Or Symbol. ...
- Collate Symbol. ...
- Manual Loop Symbol. ...
- Data Storage or Stored Data Symbol. ...
- Display Symbol.
- 

### **Question#43**

Why organizations invest huge capital in security policy.

Ans:

#### **Question#44**

Passive attack ki type recognize krna thi?

Ans:

Traffic analysis. This involves analyzing network traffic as it moves to and from the target systems. ...

- Eavesdropping. ...
- Footprinting. ...
- Spying. ...
- War driving. ...
- Dumpster diving.

#### **Question#45**

Biometrics ki types

Ans:

While there are many types of biometrics for authentication, the five most common types of biometric identifiers are:

fingerprints,

facial,

voice,

iris,

and palm or finger vein patterns.

#### **Question#46 MIDTERM**

**What do you mean by prototyping?**

**Ans:**

There are several methods of industrial design prototyping: iterative, parallel, competitive, and rapid. These different methods of prototyping produce varying models of proof-of-concept during the product development process

What is system Analysis in sdlc?

Ans:

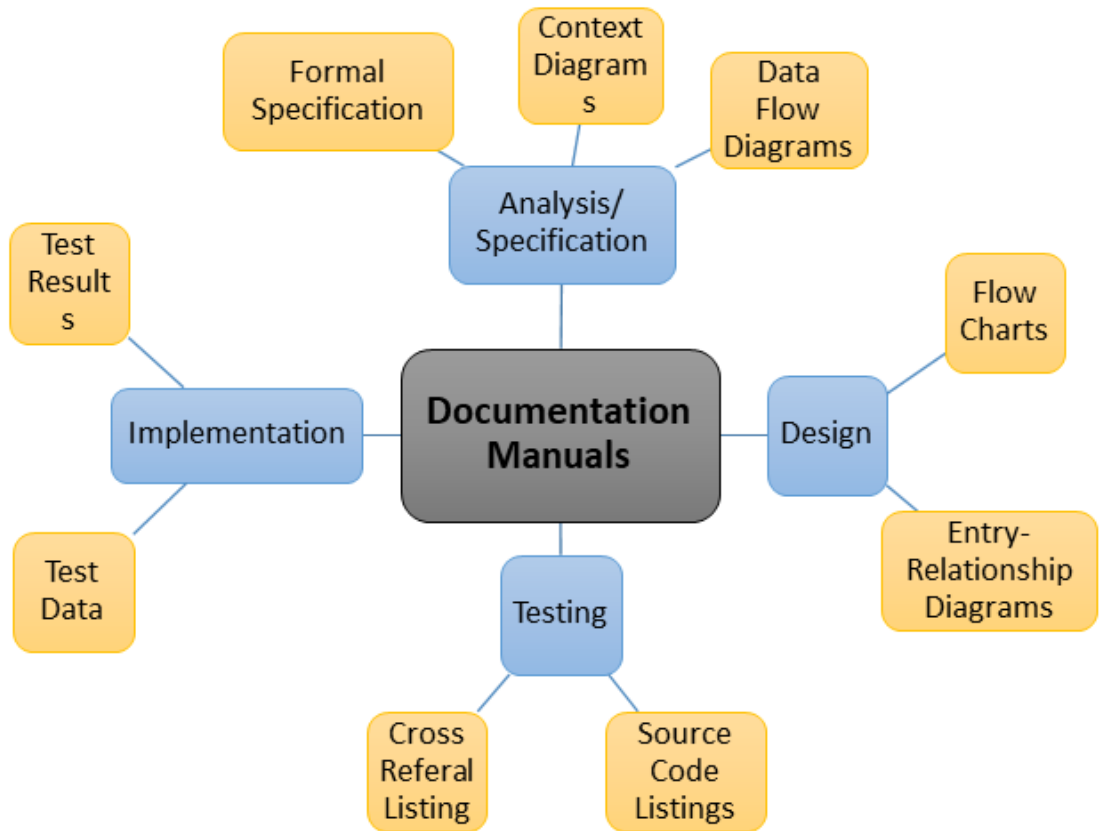
Systems analysis, requirements definition: Define project goals into defined functions and operations of the intended application

#### **Question#47**

**Different types of documentation manuals in software engineering**

**Ans:**

- Analytics/ Specification Manual. The analytics and specification Manual is prepared during the initial phase of the software development, which is the requirement analysis phase. ...
- Design Manual. ...
- Implementation Manual. ...
- Testing Manual.



Best of luck

(remember me in your pray)